

RELIABLE TRANSPORT, LOGISTICS, WAREHOUSING & CONTAINER SERVICES SOLUTIONS ACROSS SOUTH AFRICA

JFM Logistics is a trusted South African logistics partner, providing reliable nationwide transport services supported by strategically located warehousing and container depot facilities in Port Elizabeth and Cape Town. We deliver tailored supply chain solutions, competitive rates, and exceptional service, helping businesses across South Africa move goods efficiently, securely, and on time.



TRANSPORT - WAREHOUSING - LOGISTICS

www.jfmlog.co.za

COMPANY OVERVIEW

Delivering Logistics Solutions That Move Your Business Forward

JFM Logistics is a solutions driven logistics partner, focused on reliability, responsiveness and delivering measurable value throughout the supply chain.

Established in 2012, we have grown into a trusted logistics partner, serving businesses nationwide from our strategically located facilities in Markman, Port Elizabeth, Parow and Blackheath, Cape Town.

At JFM Logistics, we believe exceptional logistics starts with exceptional partnerships. Driven by a commitment to operational excellence and customer success, we deliver tailored supply chain solutions designed around each client's unique needs.

Our proactive approach, industry expertise, and relentless focus on service ensure we create lasting value, reliability, and results at every stage of the logistics journey.

Whether you require transport, warehousing, container services, or end-to-end supply chain support, JFM Logistics has the expertise, infrastructure, and commitment to keep your business moving forward with confidence.





JFM Depot Solution - Port Elizabeth & Cape Town

JFM has invested in modern depot infrastructure to address industry challenges such as port congestion, limited reefer support, operational inefficiencies, and compliance risks.

Key features include:

- Full-service container depot for dry and reefer containers
- 24/7 reefer plug-in and monitoring
- M&R services
- Secure container yards
- System to system integration
- Industry-leading truck turnaround times that minimises downtime and maximises service reliability

Our mission is to raise service standards within the South African container logistics industry by delivering an "F1 Depot" experience built on:

- Efficiency
- Reliability
- Flexibility
- Attention to detail
- Customer-focused service excellence

Customer Benefits

- Single point of collection and service delivery
- Improved inventory and stock management
- Lower operational and supply chain risk
- Reduced container damage and contamination risks
- Cost savings through integrated logistics services



OUR DIRECTORS



FREEK ERASMUS
CEO / CTO



MICHAEL ANTHONY SHADIACK
CEO / COO



MICHELLE ERASMUS
Financial / HR
Director



FRANCOIS NEL
Regional Warehouse
Director PE



RHYS TREGONING
Output Operations
Director



OMAR SAMUELS
National Container
Depot Director

WHY CHOOSE JFM LOGISTICS

Customer-Focused Solutions - Every business is different. We design transport and logistics solutions tailored to your operational requirements.

Strategic Locations – Our facilities in Port Elizabeth and Cape Town, positioned near major port gateways, enable efficient distribution across key South African markets, helping drive trade and support economic growth.

Reliable Transport Network - Supported by experienced drivers, trusted subcontractors, and dedicated logistics professionals.

Warehousing & Distribution - Secure storage and efficient distribution services designed to keep your supply chain moving.

Service Excellence - We pride ourselves on proactive communication, attention to detail, and consistently dependable service.

Company Values - Built on integrity, accountability, and long-term customer relationships.

OUR SERVICES

WAREHOUSE SERVICES

- Palletised and loose cargo storage
- Food-grade commodity storage
- Hazardous cargo storage (PE only)
- Cargo staging and consolidation
- Palletising and shrink-wrapping services
- Full stock inventory management and control (WMS in place)
- Import container unloads
- Export container packs
- Cross-docking

INFRASTRUCTURE & SAFETY

- Backup generators avoiding downtime
- ASIB-approved warehouse fire protection sprinkler systems (CPT)
- Secure, structured warehouse layouts
- Monitored storage environments

DEPOT SERVICES

- Full container storage
- Empty container storage
- Hazardous FCL storage
- Container repairs

INSPECTIONS

- DAFF inspections
- NRCS inspections
- Police inspections
- Port Health inspections
- Customs Licensed Depot
- State Veterinary Licensed Depot

TRANSPORT SERVICES

- Specialised local and long-distance cargo transport, handling everything from hazardous and abnormal loads to temperature-controlled and project cargo with precision and care.
- Cargo distribution services
- Scheduled deliveries
- Specialized freight handling
- Live tracking and updates - dedicated tracking team
- LCL
- Side loaders
- 24-hour control room surveillance and security
- VGM (Verified Gross Mass) services



OUR FACILITIES



Strategically Positioned Logistics & Container Depot Facilities

JFM Logistics operates modern logistics and container depot facilities in both Cape Town and Port Elizabeth, providing customers with integrated transport, warehousing, container handling, storage, and inspection solutions across South Africa.

Our strategically located sites are designed to maximize operational efficiency, streamline cargo movement, and support growing supply chain requirements.



Head Office, Warehouse, Full Container & Transport Depot:

607 Chevrolet Street
Markman Industrial
Port Elizabeth, 6002

Empty Container Depot & Reefer Facility:

607B Chevrolet Street
Markman Industrial
Port Elizabeth, 6001



Empty & Full Container Depot / Reefer and Bulk Warehouse Facility:

(Former UCD Facility)
1 Jan Smuts Road
Beaconvale, Parow
Cape Town, 7500



Transport Depot, Palletized & Bulk Warehouse Facility:

(Former DB Schenker Facility)
25 & 27 Rand Street
Blackheath
Cape Town, 7581



607 CHEVROLET STREET
PORT ELIZABETH



DESCRIPTION	The facility is located at 607 Chevrolet Street, Markman, Port Elizabeth, comprising of Industrial warehousing and office space.	
PROPERTY SIZE	Warehouse	4 000m ²
	Office	3 00m ²
	Yard Area	29 500m ²
GLA	34 700m ²	



607 CHEVROLET STREET
PORT ELIZABETH





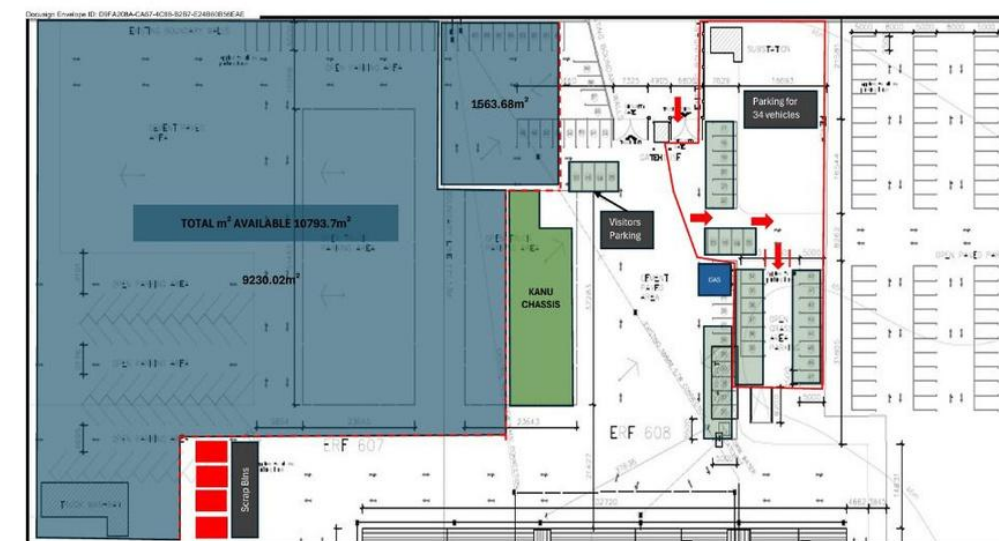
607 B CHEVROLET STREET
PORT ELIZABETH



607 B CHEVROLET STREET
PORT ELIZABETH



DESCRIPTION	The facility is located at 607 B Chevrolet Street, Markman, Port Elizabeth, comprising of Industrial warehousing and office space.	
PROPERTY SIZE	Warehouse & Offices	8 000m ²
	Yard Area	17 000m ²
GLA	26 595m ²	





1 JAN SMUTS ROAD
PAROW



DESCRIPTION	The facility is located at 1 Jan Smuts Road, Beaconvale, Cape Town, comprising of Industrial warehousing and office space.	
PROPERTY SIZE	Warehouse & Offices	5 972m ²
	Yard Area	24 266m ²
GLA	30 238m ²	





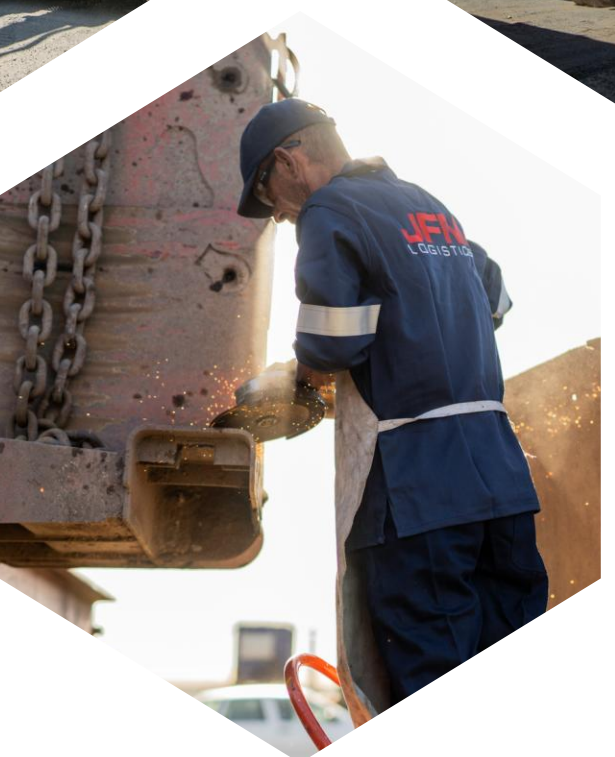
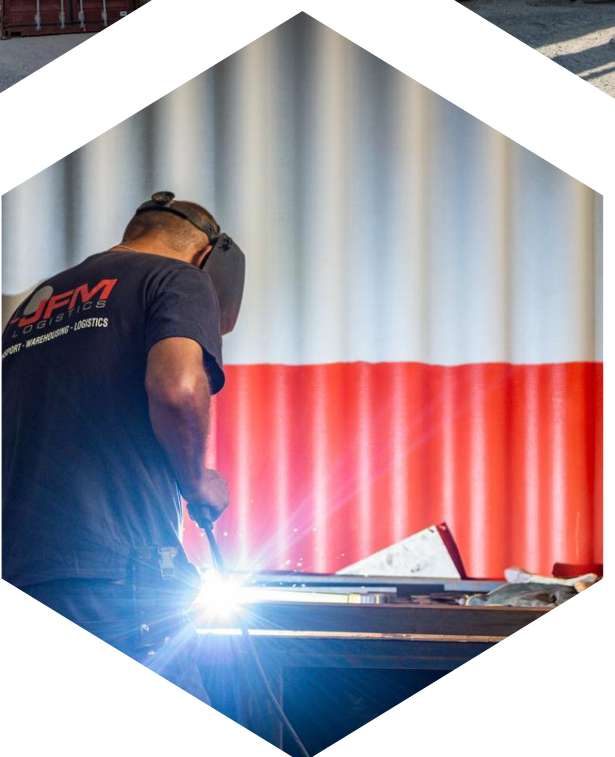
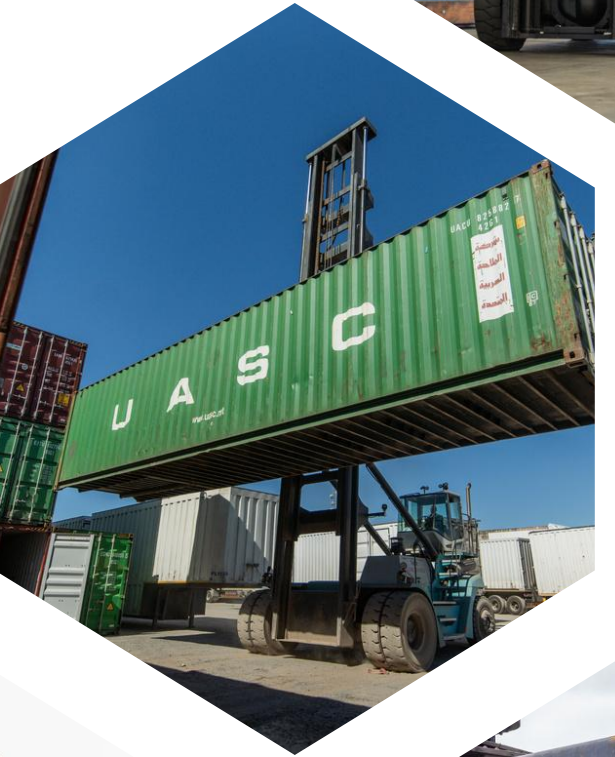
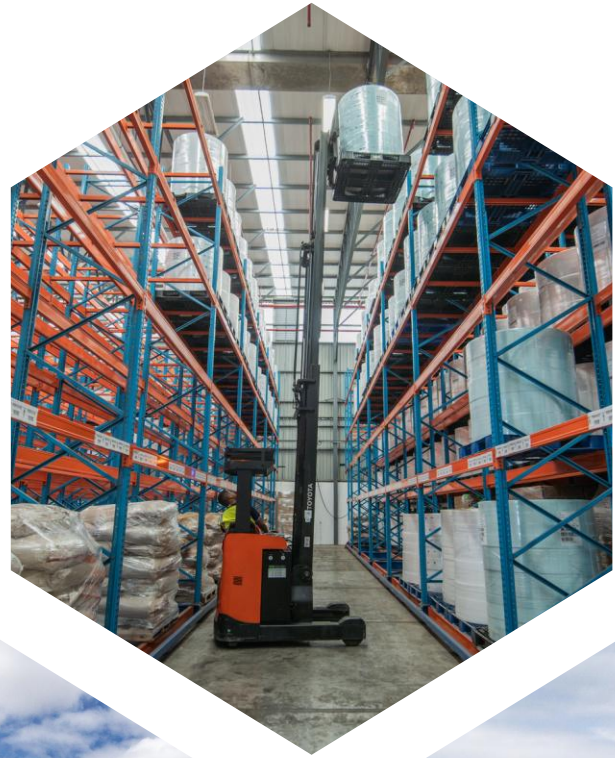
**25 & 27 RAND STREET
BLACKHEATH**



DESCRIPTION	The facility is located at 25 & 27 Rand Street, Blackheath, Cape Town, comprising of Industrial warehousing and office space.	
PROPERTY SIZE	Warehouse & Offices	8 000m ²
	Mezzanine	480m ²
	Canopies	436m ²
	Office Block	835m ²
GLA	18 871m ²	



**OUR JOURNEY IN MOTION
MOVING BUSINESS FORWARD AND
DELIVERING CONFIDENCE ACROSS
EVERY JOURNEY.**



NATIONAL FLEET

Our modern fleet is equipped to handle a wide range of transport requirements, ensuring reliable and efficient service delivery.

- 30 × Local Triaxles
- 66 × Long-Distance vehicles, including:
 - Interlink trailers
 - Triaxles
 - Drop-side trailers
 - Flat Deck trailers
 - Tautliners
 - Low-beds
 - Step-decks
 - 8 Ton Trucks
 - LCL service vehicles
 - Gensets
- 3 × Side Loaders
- Extensive network of approved subcontractors to support additional capacity and specialized transport requirements
- Comprehensive tracking systems on both trucks and trailers
- 24/7, 365 in-house monitoring of live vehicle telematics



MACHINERY & MATERIAL HANDLING EQUIPMENT



Container Handling Equipment

- 3 × Reach Stackers / Full Container Handlers (Cape Town and Port Elizabeth based)
- 4 × Empty Container Handlers (Cape Town and Port Elizabeth based)

Forklift Fleet

- 2 × 5-Ton Forklift (Port Elizabeth)
- 1 × 4.5-Ton Forklift (Port Elizabeth)
- 6 × 2.5-Ton Forklifts (Port Elizabeth)
- 1 × 5-Ton Forklift (Cape Town)
- 1 × 2.5-Ton Diesel Forklift (Cape Town)
- 1 × 2.5-Ton Electric Forklift (Cape Town)
- 1 × Forklift with Bale Clamp Attachment, Gas Powered (Cape Town/Port Elizabeth)

Specialized Handling Equipment

- Coil Rigging Equipment
- Extendable Forks with Various Forklift Attachments
- 2 × Reach Trucks
 - 7-metre lifting height
 - 1.5-ton lifting capacity

Available in Cape Town and Port Elizabeth

Operational Capability

Our fleet and material handling equipment enable us to provide comprehensive logistics, warehousing, container handling, breakbulk cargo management, and specialized freight solutions. With strategically located resources in both Cape Town and Port Elizabeth, we are equipped to deliver efficient, safe, and reliable cargo handling across South Africa.

SECURITY OVERVIEW



To ensure the safety and security of all personnel, assets, cargo, and infrastructure, a comprehensive multi-layered security solution has been implemented across our facilities. This integrated approach combines physical security measures, advanced surveillance technology, intrusion detection systems, and real-time monitoring to provide continuous protection and rapid response capabilities.

24/7 CCTV Monitoring - A fully operational off-site CCTV monitoring system provides round-the-clock surveillance of the premises.

- Live camera feeds are monitored 24 hours a day, 7 days a week by trained security personnel.
- Continuous monitoring ensures immediate identification and assessment of suspicious activity.
- Real-time surveillance remains active during both operational and non-operational hours, enhancing overall site security.

On-Site Security Personnel - Dedicated security officers provide a permanent security presence at all primary access and exit points.

- 24-hour manned security coverage.
- Access control and visitor management procedures, vehicle and personnel monitoring.
- Incident response and emergency coordination.
- Close coordination between on-site security personnel and off-site monitoring teams to ensure rapid response to security events.

Surveillance Infrastructure - An extensive CCTV network has been strategically deployed throughout warehouse, yard, and office facilities.

- Cameras positioned to maximize visibility across operational areas, access points, and high-traffic zones.
- Camera placement designed to minimize blind spots and improve situational awareness.



Advanced Video Analytics & Intrusion Detection - The surveillance system incorporates intelligent video analytics technology to enhance threat detection and response.

Key features include:

- Perimeter line-crossing detection, virtual intrusion detection zones.
- Automated movement and activity monitoring.
- Real-time alarm generation for unauthorized access attempts.

When suspicious activity is detected, automated alerts are immediately transmitted to both on-site and off-site security teams for assessment and intervention.

Electric Perimeter Protection - The facility perimeter is secured by a high-voltage electric fencing system designed to provide both a physical barrier and a strong visual deterrent against unauthorized access.

- Continuous perimeter protection.
- Tamper detection monitoring.
- Integrated alarm functionality.
- Immediate notification of breach or interference attempts.

The electric fencing system is fully integrated with the site's overall security infrastructure, ensuring rapid identification and response to any potential perimeter breaches.

SECURITY COMMITMENT

Our integrated security framework provides continuous protection for personnel, customer cargo, equipment, and operational infrastructure. Through the combination of trained security personnel, advanced surveillance technology, intelligent intrusion detection systems, and robust perimeter protection, we maintain a secure operating environment while ensuring business continuity and operational reliability.



RISK MANAGEMENT AND QUALITY CONTROL

Our warehouse storage strategy is designed to maintain the highest standards of operational efficiency, product integrity, and supply chain reliability.

To effectively manage risk, the facility incorporates clearly designated storage zones, comprehensive fire prevention systems, routine pest control programs, and controlled access procedures to ensure a safe and secure operating environment.

Product damage is minimized through the use of an optimized Warehouse Management System (WMS), standardized handling procedures, and ongoing staff training focused on safe material handling, proper stacking techniques, and adherence to industry standards.

Full inventory traceability is achieved through a robust WMS that provides real-time visibility of stock movements using barcode scanning, batch identification, and systematic inventory controls. This enables accurate stock management, rapid issue resolution, and complete transparency throughout the storage process.

Quality assurance is further strengthened through scheduled facility inspections, housekeeping programs, and continuous environmental monitoring to maintain appropriate storage conditions. Our warehouse infrastructure is well suited to products requiring controlled storage environments, including temperature- and moisture-sensitive goods.

To mitigate transport related risks, all contracted transport providers operate under formal service-level agreements that define performance standards, compliance requirements, vehicle suitability, and delivery protocols. Contingency transport arrangements are maintained to ensure continuity of service in the event of vehicle breakdowns, capacity constraints, labour disruptions, or other unforeseen operational challenges.

Comprehensive insurance coverage forms a key component of our risk management framework. This includes Goods-in-Transit (GIT) insurance to protect products while in transit, relevant third party liability covers are in place across all divisions as well as appropriate warehouse liability and asset protection cover. Business continuity and contingency plans are in place to ensure rapid response and recovery from incidents that could impact storage or distribution operations.

This integrated risk management and quality control framework supports operational excellence, regulatory compliance, business continuity, and the preservation of product quality throughout the entire storage and distribution lifecycle.

